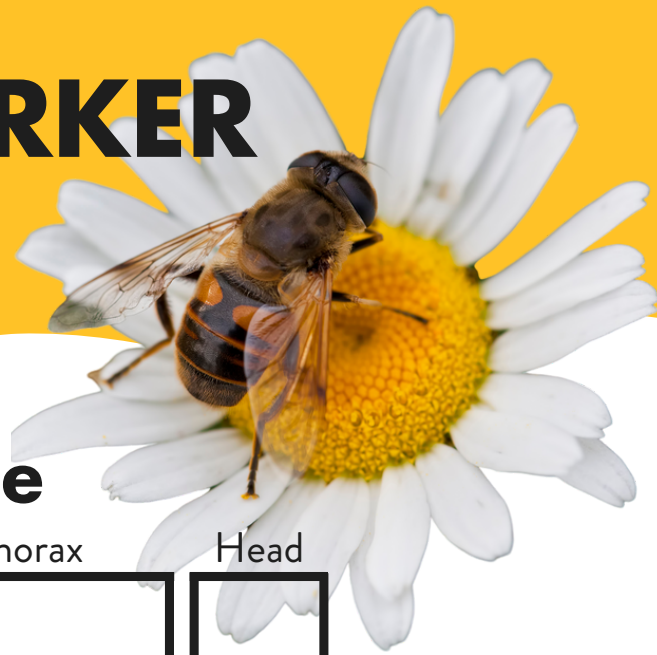
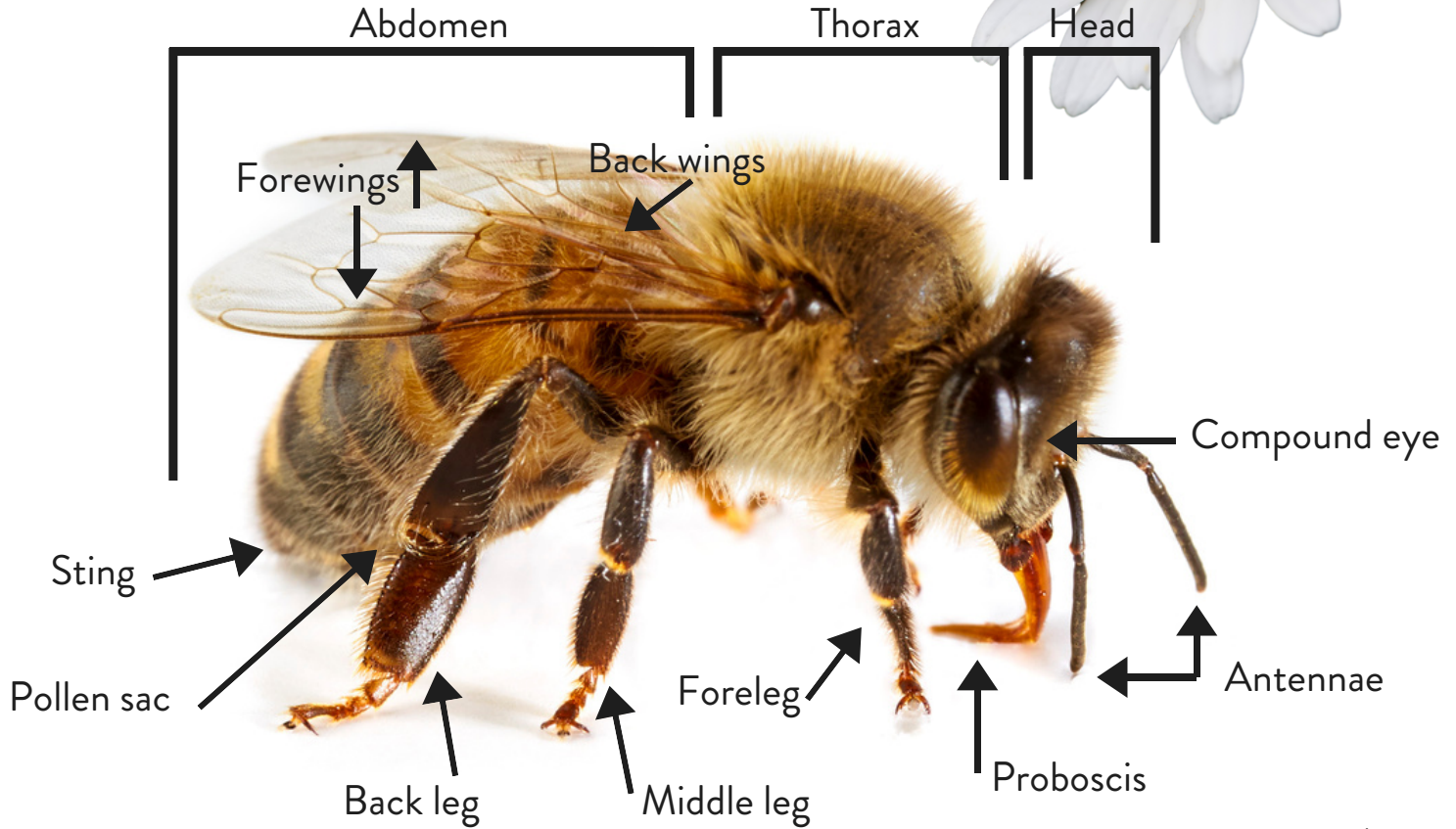


HONEY BEE WORKER

Apis mellifera



Anatomy of a Honey Bee



Honey bees and agriculture

Livestock are dependent on bee-pollinated forage plants, such as clover.

Bees pollinate 400 of the world's agricultural plants.

Honey bees contribute nearly \$20 billion to the value of U.S. crop production.

Almonds depend entirely on the honey bee for pollination at bloom time.

2.7 million bee colonies in the U.S., 2/3 of which travel the country pollinating crops.

90% of blueberry and cherry crops are dependent on honey bee pollination.