

Life Cycle

PLANT



Seeds

Seeds contain a plant with leaves, stem, and roots.



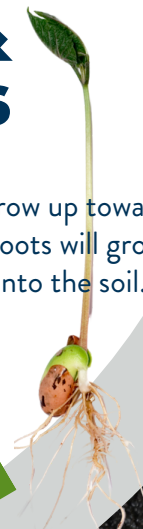
With soil, water and sun, the plant can begin to grow.



Germination

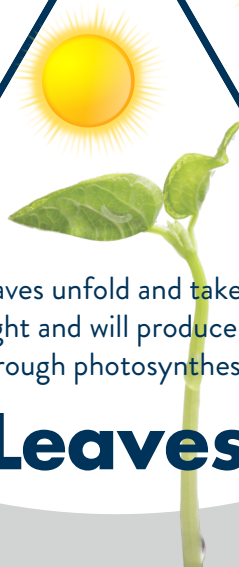
Stems & Roots

Stems will grow up toward the light. Roots will grow down into the soil.



Leaves

Leaves unfold and take in sunlight and will produce food through photosynthesis.



Pollination

Flowers are pollinated when pollen from the stamen moves onto the pistil. Seeds and fruit are produced.



Flowers

Many plants produce flowers that are important in making seeds.



Fun Facts

Some plants are called annuals. These are mature plants that die off each season.

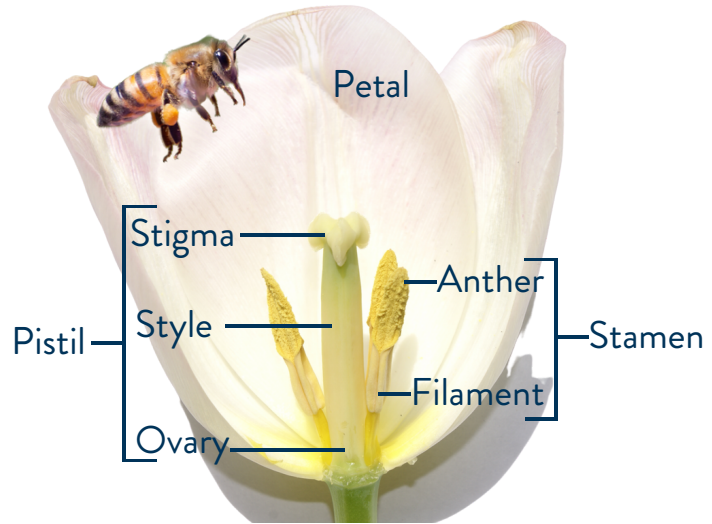
Some plants are called perennials. These plants live and keep making new seeds every spring and summer.

Plants like ferns and moss don't grow from seeds. Instead, they grow from spores. Spores are often carried by wind to other places, where they land on the ground and grow into a new plant.

Sometimes animals eat seeds. When the animals go to the bathroom, the seed lands in a new place and is able to grow.

Plants don't just grow on land. They can also be found in fresh and salt water.

Parts of a flower



Seed Germination Epigeal

