

Click [here](#) to view this email in your browser.



JANUARY 2023

WELCOME!

If you are a new subscriber, we welcome you! We are happy to have you as part of our effort to share resources that support ag literacy. If you missed the last edition, scroll down to the bottom of this newsletter for the link to access the newsletter archive page!

We hope you enjoy the quarterly newsletter and encourage you to invite others to join.

In partnership,
The Knowledge Center Team

UPCOMING KNOWLEDGE CENTER EVENTS



TRAINING TOO IMPORTANT TO MISS!

Open to agriculturists of all ages! Our Farm Management Institutes are geared toward small and beginning farmers, ag educators and students. Participants will gain knowledge of the industry from a local and global perspective and gain tools and information to aid in business planning and decision-making.

Join us this March for one of our scheduled events:

Dates and Locations:

March 28th, 2023 - West Virginia State Fair Grounds – Dr. Kohl and Jesse Richardson

March 29th, 2023 - Hungry Mother State Park – Dr. Kohl and Jennifer Friedel

[Click Here To Learn More And To Register](#)

WHAT'S NEW FROM THE KNOWLEDGE CENTER?



Everything But The...Series of Animal By-Product Resources

The Everything But The Moo, Baa, Oink have been our most beloved ag literacy resources over the past 5 years! The series has evolved to include goat and poultry and fillable PDF worksheets. Thanks to suggestions and requests from educators like you, the series has become what it is today.

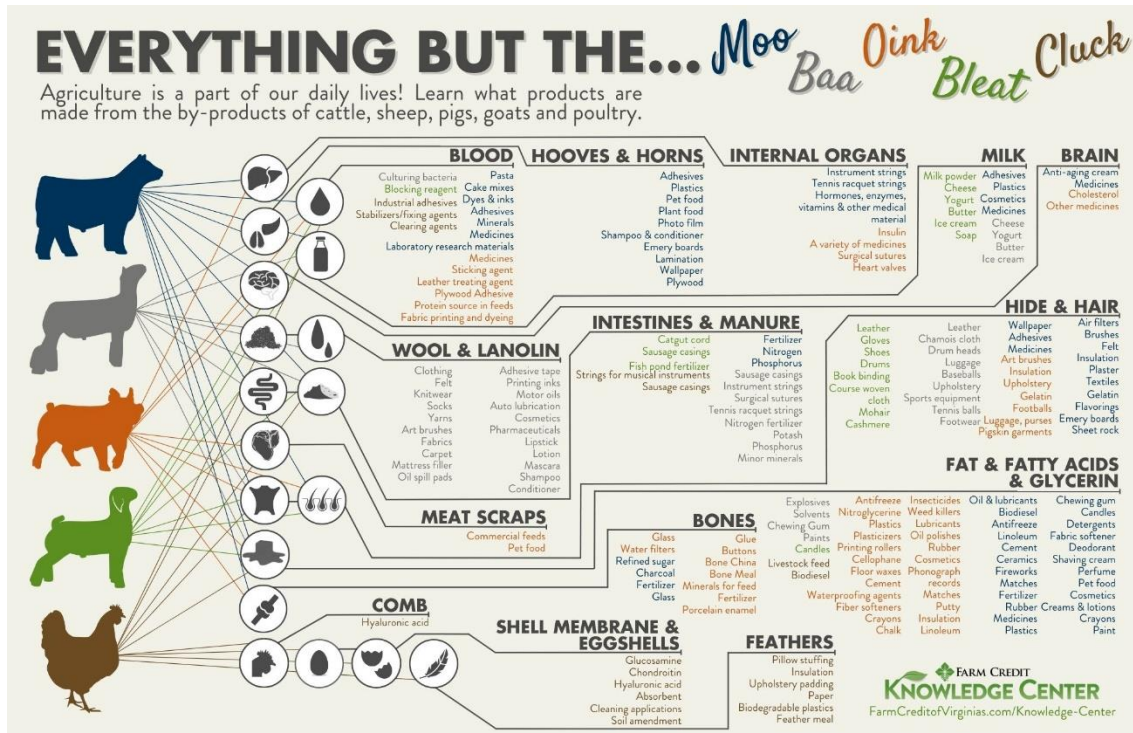
With so many of you using the resource, we wanted to update the look and feel of the infographics, create a combined infographic in poster size and add additional lessons and activities.

We are extremely excited about the new series and as subscribers to our newsletter, you are receiving first access. We hope you enjoy!

Included in the series:

- Updated infographics
- Poster-sized files of all infographics
- Blog articles
- Videos
- New lessons and activities

Everything But The...RESOURCES!



KNOWLEDGE CENTER BLOG & INFOGRAPHICS

Everything But The...series of blog articles

Access individual specie information and resources by visiting and linking to the following blog articles:

[Everything But The Moo](#)

[Everything But The Baa](#)

[Everything But The Oink](#)

[Everything But The Bleat](#)

[Everything But The Cluck](#)

POSTER FILES

As a subscriber to our newsletter, you receive special access to poster-sized files of some of our popular infographics. These files are sized and prepared for commercial printing. Poster files currently available:

THE LIFE OF A DAIRY CALF

- 1** My story starts before I am born. When my dam (mother) calfs, she lets the baby calf drink her milk. This helps the calf get the antibodies it needs to survive. This helps to increase the chances of survival. I may be required to suckle for several hours.
- 2** When I am born, the farmer helps clean my udder, and makes sure I am breathing properly. My eye must be tested, and I get my collar. The collar is used to identify me. I will wear it for the rest of my life. This helps the farmer to keep track of me. I may be required to suckle for several hours.
- 3** I am then moved to a hutch with a wall bar. The hutch is a small room with several calves. It is warm and dry. I will be given colostrum in the first few hours of my life. This will help me to get started. I will be with my dam for 24 hours of my life, and will have access to clean water and feed.
- 4** I stay in my hutch for 3-8 weeks. The farmer checks on me every day. I have my own feed bucket. I will eat and drink from it. I will be with my dam for 24 hours of my life, and will have access to clean water and feed.
- 5** I will be weaned off of milk replacer and onto a diet of calf starter. I will be with my dam for 24 hours of my life, and will have access to clean water and feed.
- 6** When I am 8-12 weeks old, I will be moved to a pasture. I will be with my dam for 24 hours of my life, and will have access to clean water and feed.

FARM CREDIT KNOWLEDGE CENTER
www.FarmCreditVirginia.com

The Life of a Dairy Calf
18" x 24"
[Download](#)

Top 10 IN-DEMAND SOFT SKILLS

Employers seek candidates with a strong set of soft skills. Soft skills are also known as personal skills, non-technical skills and interpersonal skills.

- Creativity**
The ability to view a problem from multiple angles helps to generate ideas so business can move forward.
- Teamwork**
Being able to work with others to move toward a common goal.
- Dependability**
This means you are trust-worthy and reliable.
- Assertiveness**
Confidence in your work abilities. Able to express your opinions and contribute.
- Problem-Solver**
Ability to calmly analyze a situation and identifying possible solutions.
- Communication**
One's ability to give and receive information.
- Flexibility**
Ability to adapt to changing needs.
- Time Management**
Ability to effectively manage multiple tasks simultaneously.
- Accountability**
Taking responsibility for your work and your actions.
- Leadership**
Ability to handle tasks on your own and to work independently.

FARM CREDIT KNOWLEDGE CENTER
www.FarmCreditVirginia.com/Knowledge-Center

Top 10 Soft Skills
12" x 24"
[Download](#)

Dairy Goat Breeds

Production Range • Butterfat • Protein

Breed	Production Range	Butterfat	Protein
Alpine	150-450	3.5-5.5	2.9-3.9
Lamancha	80-150	5.5-7.5	3.2-4.2
Nigerian Dwarf	120-210	6.4-8.1	4.4-5.5
Nubian	120-210	5.5-7.5	3.8-4.8
Oberhasli	120-300	5.5-7.5	3.0-4.0
Saanen	120-300	5.5-7.5	3.8-4.8
Sable	150-310	4.5-6.5	3.8-4.8
Toggenburg	150-310	4.5-6.5	3.8-4.8

FARM CREDIT KNOWLEDGE CENTER
www.FarmCreditVirginia.com/Knowledge-Center

Dairy Goat Breeds
18" x 24"
[Download](#)

RESOURCE CONNECTION

Below you will find links connecting you to additional ag literacy resources. We'd love to see Knowledge Center ag literacy resources in action! Use our hashtag **#farmcreditknowledgecenter** when posting to social media.

AgBite

A series of community insights

Overview
Per person consumption in the U.S. is on the rise.
Consumers are more aware of the importance of eating a healthy diet.
Domestic supply is expanding.
Importation allows for year-round availability.

Production
In 2017, the United States produced 1.6 billion pounds of strawberries.
Average strawberry yield per acre was 53,300 pounds in 2017.
The average gross price for fresh strawberries is \$125/acre/season.

Nutritional Information (per 100g)
Total Fat: 0.4g
Cholesterol: 0mg
Sodium: 1mg
Potassium: 220mg
Total Carbohydrate: 14.7g
Dietary Fiber: 2.3g
Sugars: 7.6g
Protein: 1.1g

Aggregate Fruit
Pericarp
Sepal
Receptacle
Achene
Seed

FARM CREDIT KNOWLEDGE CENTER
www.FarmCreditVirginia.com

Strawberries

- [Strawberry Parts and Facts PowerPoint](#)
- [Strawberry Activity Lesson Plan](#)
- [AgBite- Strawberry Infographic](#)
- [AgBite- Poster 18" x 24"](#)
- [Strawberry Fun Facts](#)
- [Strawberry Fun Facts ver.2](#)
- [Strawberry Crossword Puzzle](#) and [Answer key](#)
- [Virtual Farm to Table Video: Strawberry](#) (Virginia Cooperative Extension)
- [Growing Strawberries in Home Garden](#) (Univ. of Maryland)
- [Strawberry Facts](#) (Illinois Extension)

Common GREENHOUSE STRUCTURES

- Low Tunnel**
 - Temporary
 - Low cost \$
 - Wire or tube frame
 - Plastic covering
- Hoop House**
 - Semi-permanent
 - Low cost \$\$+
 - Bent tube frame
 - Plastic covering
- High Tunnel**
 - Semi-permanent
 - Medium cost \$\$+
 - Bent tube frame
 - Plastic covering
- Traditional Greenhouse**
 - Permanent
 - Higher cost \$\$\$+
 - Metal or wood frame
 - Plastic or glass covering
- Commercial Greenhouse**
 - Permanent
 - Higher cost \$\$\$\$+
 - Metal frame
 - Plastic or glass covering

www.FarmCredentVirginia.com/Knowledge-Center **4-H ANI-CREDIT KNOWLEDGE CENTER**

Greenhouses

[Common Greenhouse Structures](#) - Infographic

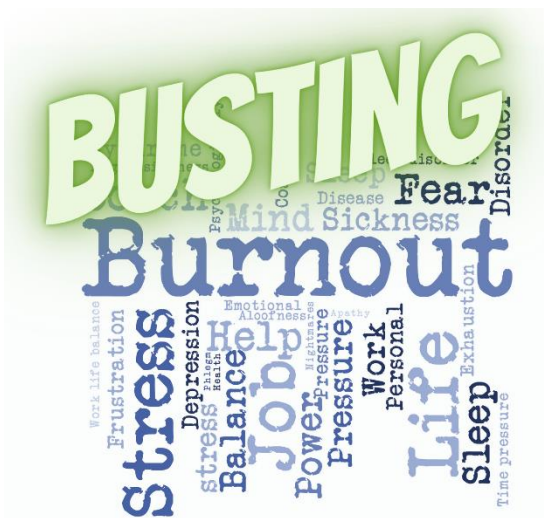
[Greenhouse Structures Activity Idea](#)

[Common Greenhouse Structures](#) Blog Article

[My Little Greenhouse](#) - Blog including infographic and activity

[Life Cycle of a Plant](#) - Informational Blog and infographic

[Gardening 101-Low Tunnels](#) (West Virginia University)



YOUTH



Educating yourself is just as, if not more, important as educating your students. Continuing your education, through classes, conferences, workshops, etc... helps you keep your information fresh, current and relatable. It is also a great way to meet new people, develop new content, and fill your proverbial cup. Challenge your mind, meet new people, and stay fresh in the classroom and with your curriculum.

Bringing relevancy to budgets and money, sometimes, is a challenge when working with youth. Finding ways to connect and make it applicable is so important. An activity you can do with youth is to have them plan out their favorite meal. If it is a recipe, list out the ingredients and everything it would take to prepare the entire meal. Price out the ingredients and meal and prepare a cost sheet. Then have them do that same activity with prices from 3 years ago and then 10 years ago to see how the value of the dollar has changed.

UPCOMING IN OUR APRIL EDITION...

Livestock Showbox – This will encompass multiple resources for both youth and adults just in time for the show season! Whether you are a club leader, teacher, on your local fair board, extension agent, or a parent looking for resources, we have you covered! Find current resources [HERE](#).

The upcoming show box will include:

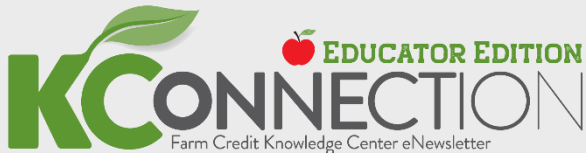
- How to write a good buyers letter
- How to write a good thank you letter
- Videos and much more!

Special access to more poster-sized (24"x36") Image Files!
More resource connections, with lesson plans!

In case you missed it...

Visit our Subscriber's Archive to access past editions and additional resources.

[Visit Archive](#)



Were you forwarded this newsletter?

You can sign up here:

[Sign up](#)



Looking for ag industry news, commodity updates
and producer resources?

Sign up for our monthly KConnection:

[Sign up](#)

Farm Credit Knowledge Center

www.FarmCreditofVirginias.com/Knowledge-Center

Email: KnowledgeCenter@FCVirginias.com

The Farm Credit Knowledge Center is the educational arm of [Farm Credit of Virginias](http://www.FarmCreditofVirginias.com). The mission of the Knowledge Center is to facilitate the sharing of knowledge and resources among all individuals interested in agriculture.

The logo for Farm Credit Knowledge Center features a green leaf icon on the left, a green four-leaf clover icon in the center, and the text "FARM CREDIT" in black serif font above "KNOWLEDGE CENTER" in large green sans-serif font.

FARM CREDIT
KNOWLEDGE CENTER

Click [here](#) to unsubscribe or to change your Subscription Preferences.*

*By unsubscribing from this communication, you will no longer be eligible to receive emails from Farm Credit of the Virginias or the Farm Credit Knowledge Center, outside of direct correspondence with employees.

[LEGAL DISCLOSURES](#)