

Click [here](#) to view this email in your browser.



OCTOBER 2022

## WELCOME!

If you are a new subscriber, we welcome you! We are happy to have you as part of our effort to share resources that support ag literacy. If you missed the last edition, scroll down to the bottom of this newsletter for the link to access the newsletter archive page!

We hope you enjoy the quarterly newsletter and encourage you to invite others to join.

In partnership,  
The Knowledge Center Team

---

## WHAT'S NEW FROM THE KNOWLEDGE CENTER?

### Soft Skills Curriculum - (Middle and High School)

Relevant soft skill development is more critical than ever. Soft skills, AKA employability skills, transferable skills or work readiness skills, are expanding to include social etiquette, virtual appropriateness, and non-verbal communication, in addition to more traditional skills like communication and character. With the Knowledge Center's developed Soft Skills curriculum, you can prepare your students with the skills needed for today's workplace.

[Request Access](#)

Help us spread the word about this awesome resource! Download and share the curriculum flyer, [HERE](#).



Relevant soft skill development is more critical than ever. Soft skills, AKA employability skills, transferable skills or work-readiness skills, are expanding to include social etiquette, virtual appropriateness, and non-verbal communication, in addition to more traditional skills like communication and character. With the Knowledge Center's developed Soft Skills curriculum, you can prepare your students with the skills needed for today's workplace.

The curriculum contains interactive lessons and activities that are instructor-led, project-based, and relevant.

**Soft Skills curriculum consists of six units covering the following topics:**

CHARACTER

SOCIAL SKILLS

COMMUNICATION



WORKPLACE

ETIQUETTE AND ETHICS

PUTTING SKILLS TO THE TEST

**Each Unit includes:**



**Detailed Plans**



**PowerPoint Presentation**



**Student Activities**



**Practice for Learned Skills**

To learn more or to request access, visit <https://bit.ly/3DJsvN8>



FARM CREDIT  
**KNOWLEDGE CENTER**  
www.FarmCreditofVirginias.com



Important Notice and Disclaimer  
These materials are provided for educational and informational purposes only. These materials may not be current and up-to-date. You should not act or refrain from acting based on these materials or the information they contain without seeking advice from an appropriate professional. Farm Credit of the Virginias, ACA expressly disclaims any liability for all acts and omissions taken or made in reliance on these materials or any information contained in these materials.

KnowledgeCenter@FCVirginias.com for more information!

**KNOWLEDGE CENTER BLOG & INFOGRAPHICS**

## Soft Skills our Human Resources Department Uses Daily

There are many moving parts when looking into employment, and it is essential to find out what employers are looking for. In the Knowledge Center, we know it can be stressful when going through this process, and we want to help. We set out to get the inside scoop on what employers are looking for. We had the opportunity to ask our human resources team questions about soft skills and how to prepare for the hiring process. Check out the answers from the experts!

### Read Blog



[Interviews - From both sides of the table](#)



[Resumes - What do they look for?](#)



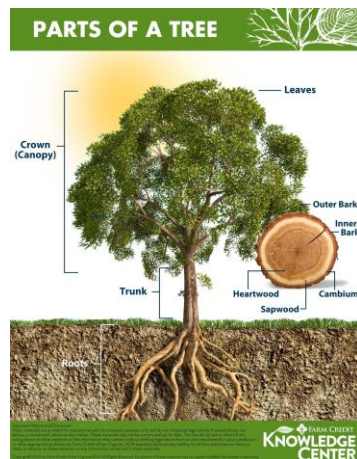
[Soft Skills HR Uses Daily](#)



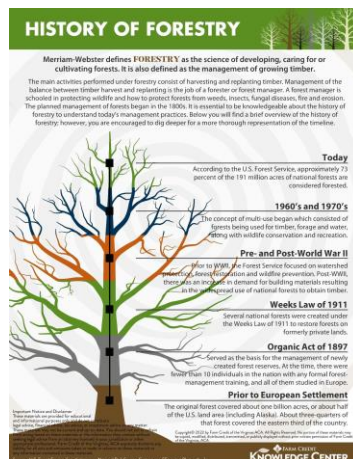
[Communication Tips](#)

## POSTER FILES - 24" x 36"

As a subscriber to our newsletter, you receive special access to poster-sized files of some of our popular infographics. These files are sized and prepared for commercial printing. Poster files currently available:



[Parts of a Tree Download](#)



[History of Forestry Download](#)



[Life Cycle of a Tree Download](#)



### PRODUCTS FROM TREES

Forestry and logging fall under the agriculture industry. Timber is harvested to make products many of us use on a daily basis. All parts of harvested timber are used resulting in zero waste.

**Solid wood products**  
Timber is used to make lumber for building and other uses.

**Wood Pulp**  
Wood is made up of cellulose fibers and lignin (a glue-like substance). Pulping is a chemical and heat process that separates the cellulose fibers from the lignin which results in many products.

**Particle Board**  
**Pallets**  
**Musical Instruments**  
**Toys**  
**Furniture**  
**Sports Equipment**  
**Decorative Items**

**Knowledge Center**

**Products From Trees**  
[Download](#)

### HONEY BEE WORKER

*Apis mellifera*

#### Anatomy of a Honey Bee

#### Honey bees and agriculture

- Livestock are dependent on bee-pollinated forage plants, such as clover.
- Honey bees contribute nearly \$20 billion to the value of U.S. crop production.
- Almonds depend entirely on the honey bee for pollination at bloom time.
- 2.7 million bee colonies in the U.S., 2/3 of which travel the country pollinating crops.
- 90% of blueberry and cherry crops are dependent on honey bee pollination.
- Beehives pollinate 400 of the world's agricultural plants.

**Knowledge Center**

**Honey Bee Worker**  
[Download](#)

### Life Cycle PLANT

**Seeds**  
Seeds contain stored food (leaves, stem, and roots).

**Germination**  
With soil, water, and air, the plant can begin to grow.

**Stems & Roots**  
Stems will grow up toward the light. Roots will grow down into the soil.

**Leaves**  
Leaves unfold and take in sunlight and will produce food through photosynthesis.

**Flowers**  
Many plants produce flowers that are important in making seeds.

**Pollination**  
Plants are pollinated when pollen grains from one flower reach the ovary of another flower.

**Knowledge Center**

**Life Cycle of a Plant**  
[Download](#)

## RESOURCE CONNECTION

Below you will find links connecting you to additional ag literacy resources. We'd love to see Knowledge Center ag literacy resources in action! Use our hashtag **#farmcreditlearningcenter** when posting to social media.

### AgBite

*A series of community insights*

**Did you know?** There are over 100 varieties of pumpkins!

#### Overview

- Pumpkins range in size from less than one pound to more than 1,000 pounds.
- The U.S. annual per capita use of pumpkin was 6.44 pounds per person in 2020.
- The value of the total production of pumpkins in 2020 is estimated at \$180.3 million with the average U.S. farm price for pumpkins approximately 8 cents per pound.

#### Production

- Approximately 15 percent of the pumpkin acreage is used to make processed pumpkin products.
- 56,200 acres of pumpkins were harvested in the U.S. in 2020, producing more than 1.5 billion pounds of usable pumpkins with more than 2 billion pounds produced overall.
- In 2020, the average pumpkin yield per acre among the top six states was 22,300 pounds and ranged considerably from 5,040 to 39,760 pounds.

#### Nutritional Information

1 cup (116 g)

Total Fat 0.1 g	Vitamin A 53%
Sodium 12 mg	Calcium 2%
Potassium 268 mg	Vitamin C 2%
Total Carbohydrate 7.5 g	Fiber 0%
Dietary Fiber 0.6 g	Vitamin B-6 44%
Sugar 1.2 g	Magnesium 3%
Protein 1.2 g	

#### Parts of a Pumpkin

**Knowledge Center**  
www.FarmCreditVirginia.com/Knowledge-Center

### Pumpkins

[All About Pumpkins and Pumpkin Facts](#) - Blog  
[Pumpkin Activity Ideas](#)

[AgBite-Pumpkin](#) - Infographic

[Pumpkin Crossword Puzzle](#) [Key](#)

[Virtual Farm to Table Video: Pumpkins](#) (Virginia Cooperative Extension)

[Eat Smart, Move More: Pumpkin Recipes](#) (Virginia Cooperative Extension)



## UPCOMING IN OUR JANUARY EDITION...

Revamped and Updated, Everything But the.... Series of animal by-product infographics and activities. Access the current series, [HERE](#).

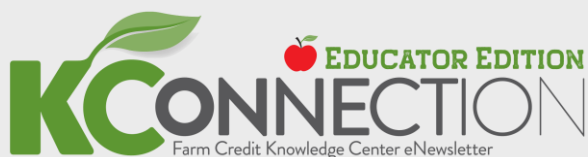
Special Access to more Poster-Sized (24"x36") Image Files!

Elementary activities, just in time for Spring.

## In case you missed it...

Visit our Subscriber's Archive to access past editions and additional resources.

[Visit Archive](#)



Were you forwarded this newsletter?

You can sign up here:

[Sign up](#)



Looking for ag industry news, commodity updates and producer resources?

Sign up for our monthly KConnection:

[Sign up](#)

### Farm Credit Knowledge Center

[www.FarmCreditofVirginias.com/Knowledge-Center](http://www.FarmCreditofVirginias.com/Knowledge-Center)

Email: [KnowledgeCenter@FCVirginias.com](mailto:KnowledgeCenter@FCVirginias.com)

The Farm Credit Knowledge Center is the educational arm of [Farm Credit of Virginias](#). The mission of the Knowledge Center is to facilitate the sharing of knowledge and resources among all individuals interested in agriculture.



Click [here](#) to unsubscribe or to change your Subscription Preferences.\*

\*By unsubscribing from this communication, you will not be eligible to receive emails from Farm Credit of the Virginias and/or the Farm Credit Knowledge Center, outside of direct correspondence with employees.

View [Legal Disclosures](#)