

[View in browser](#)



**April 2024**

---

## HELLO Marie

If you are a new subscriber, we welcome you! If you missed past editions, scroll down to the bottom of this newsletter for the link to access the newsletter archive page!

---

## Help Us With Our Next Idea!

The Knowledge Center team is continually working to provide valuable resources! But we need your help determining the needs of classrooms across America and beyond!

We are considering developing a **LIFE CYCLE series**.  
We need to know what topics you want us to consider.

**Take the Poll: Life Cycle Topics**

---

# BREED SERIES

BEEF CATTLE • DAIRY CATTLE • MEAT/FIBER GOAT • POULTRY

SWINE • HAIR SHEEP • WOOL SHEEP • DAIRY GOAT • RABBIT

## Breed Series...New Series of Resources!

Exciting news! Our brand new Breed series of species facts and figures has just been released. You now have access to the full range of informative infographics covering beef cattle, dairy cattle, meat/fiber goats, poultry, swine, hair sheep, wool sheep, dairy goats, and rabbits!

We've also included crossword and word search puzzles and keys, and a combined breed Bingo game to help you expand your classroom or FFA/4-H meeting's ag literacy toolbox.

By incorporating these new resources into your teachings, you're not only providing valuable knowledge to your students but also helping to cultivate future generations of skilled and knowledgeable livestock farmers. Start exploring these exciting new materials today!

[Visit the Breed Series Webpage!](#)



### POULTRY BREEDS

Use • Egg Production • Egg Color

From Oregon State University  
 Extension Center  
**KNOWLEDGE CENTER**  
 From Oregon State University

### DAIRY GOAT BREEDS

Production Range • Butterfat • Protein

From Oregon State University  
 Extension Center  
**KNOWLEDGE CENTER**  
 From Oregon State University

### RABBIT BREEDS

Use • Size Weights

From Oregon State University  
 Extension Center  
**KNOWLEDGE CENTER**  
 From Oregon State University

### GOAT BREEDS

Use • Weight Range • Fiber Weight

From Oregon State University  
 Extension Center  
**KNOWLEDGE CENTER**  
 From Oregon State University

### DAIRY BREEDS

Production Range • Butterfat • Protein

From Oregon State University  
 Extension Center  
**KNOWLEDGE CENTER**  
 From Oregon State University

### HAIR SHEEP BREEDS

Mature Body • Climate • Breeding Season

From Oregon State University  
 Extension Center  
**KNOWLEDGE CENTER**  
 From Oregon State University

## Resource Connection

Check out our new **Parts of a Plant** infographic!

- Parts of a Plant**
- [Infographic 8.5x11](#)
- [Worksheet](#)
- [Crossword](#)
- [Crossword Key](#)
- [Word Search](#)
- [Word Search Key](#)

- My Little Plant**
- [Classroom Activity Sheet](#)
- [Activity Instructions](#)

### PARTS OF A PLANT

From Oregon State University  
 Extension Center  
**KNOWLEDGE CENTER**  
 From Oregon State University

**The Life Cycle of a Plant.** Add ag art to your classroom walls!

## Life Cycle of a Plant

### Infographic 8.5x11

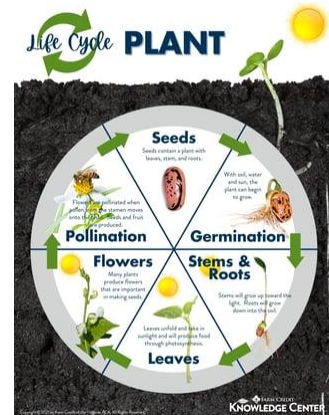
Poster Files: [11x17](#) [18x24](#) [24x36](#)

### Crossword

### Crossword Key

### Word Search

### Word Search Key



## Resource Highlight

### Soft Skills Curriculum

Looking for ways to wrap up the school year or help your students prepare for summer jobs and internships? Our Soft Skills curriculum is here to help. With 6 units designed to give students new skills for the workforce, our curriculum is the perfect resource for educators and students.

Here's a snapshot of a lesson from our

**Communication** unit:

### Non-verbal Communication Activity

### Communication Cards

### Activity Instructions

If you're interested in this activity and want to access more like it, check out our Soft Skills curriculum today.



Relevant soft skill development is more critical than ever. Soft skills, AKA employability skills, transferable skills or work-readiness skills, are expanding to include social etiquette, virtual appropriateness, and non-verbal communication, in addition to more traditional skills like communication and character. With the Knowledge Center's developed Soft Skills curriculum, you can prepare your students with the skills needed for today's workplace.

The curriculum contains interactive lessons and activities that are instructor-led, project-based, and relevant.

Soft Skills curriculum consists of six units covering the following topics:



Each Unit includes:



To learn more or to request access, visit <https://bit.ly/3DJsvN8>

Knowledge Center logo and QR code. Text: "www.FarmCreditVirginia.com" and "KnowledgeCenter@FCVirginiass.com for more information!"

Important Notice and Disclaimer: These materials are provided for educational and informational purposes only. These materials may not be correct and are in flux. You should not act or refuse from acting based on these materials or the information they contain without seeking advice from an appropriate professional. Farm Credit of the Virginia, A/C/A, expressly disclaims any liability for all acts and omissions taken or made in reliance on these materials or any information contained in these materials.

[Request Access](#)

In case you missed it...

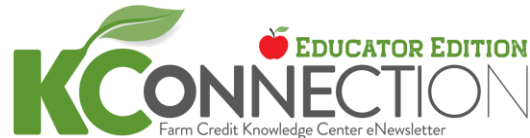
Visit our **Subscriber's Archive** to access past editions and additional resources.

[Visit Newsletter Archive](#)

**Were you forwarded this newsletter?**

Click the button below for a brief description and to subscribe.

[Subscribe to a Newsletter](#)



The Farm Credit Knowledge Center is the educational arm of **Farm Credit of Virginias**. The mission of the Knowledge Center is to facilitate the sharing of knowledge and resources among all individuals interested in agriculture.



Farm Credit of the Virginias  
102 Industry Way, Staunton, VA 24401  
1-800-919-3276 (FARM)

Contact the Knowledge Center at [KnowledgeCenter@FCVirginias.com](mailto:KnowledgeCenter@FCVirginias.com)  
[www.FarmCreditofVirginias.com](http://www.FarmCreditofVirginias.com)  
[Unsubscribe](#) [Manage Preferences](#)