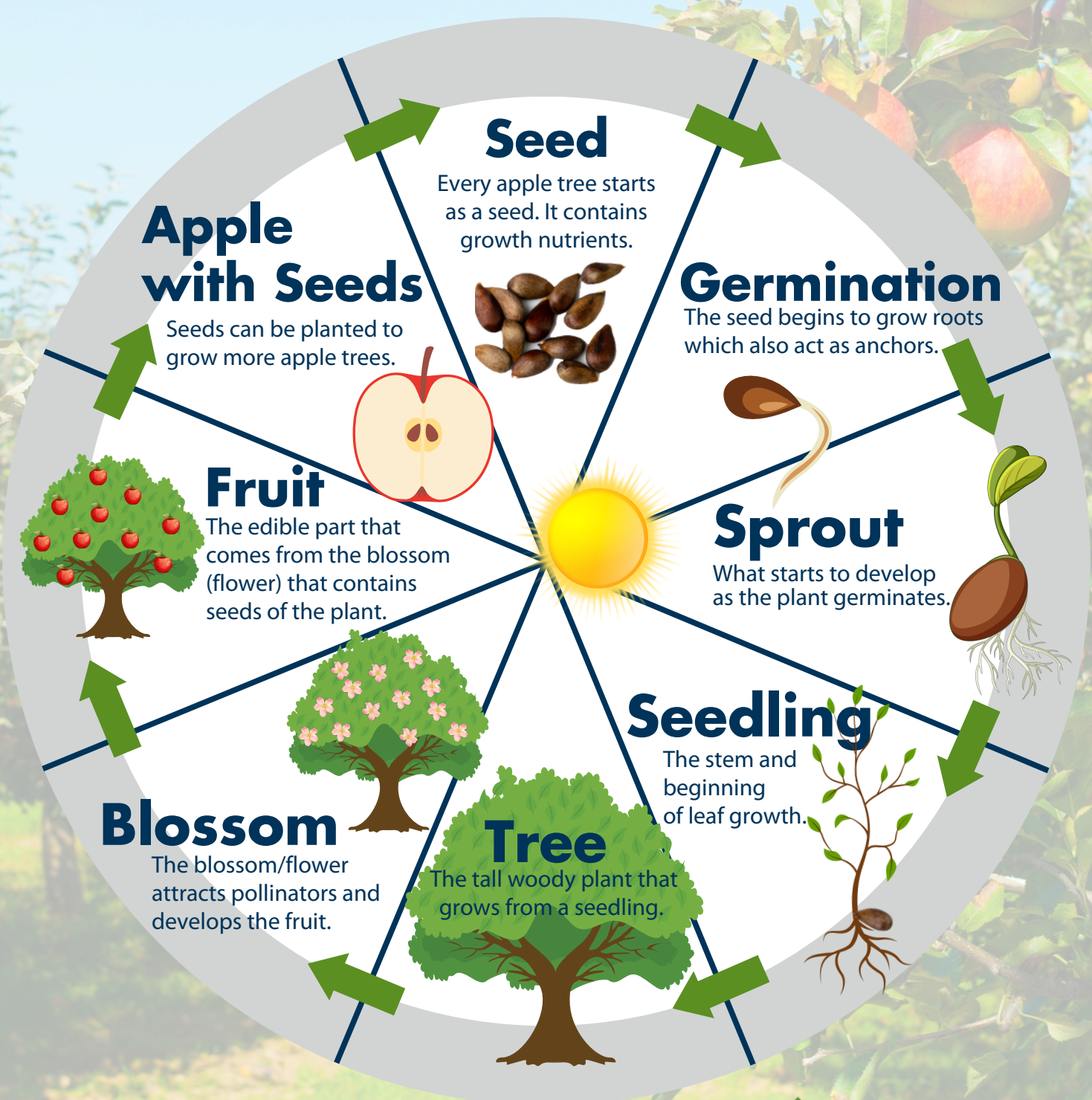


Life Cycle **APPLE**



TERMINOLOGY:

Seed- A seed contains a small plant (embryo) that will develop and grow into a larger plant.

Germination- The process when the seed starts growing into a plant.

Sprout- What starts to develop as the plant germinates.

Seedling- The young plant that grows from the seed.

Tree- The tall woody plant that grows from a seedling.

Bud- A small growth on a plant's stem that later grows into a flower or leaves.

Blossom- The flower part of the plant that attracts pollinators and develops the fruit.

Fruit- The edible part that comes from the blossom (flower) that contains seeds of the plant.

Apple- A fleshy, rounded red, yellow or green fruit that grows on trees.

Pollinators- Insects and animals that carry pollen to help plants produce fruit or seeds.

Pollen- A powdery substance that helps plants grow new seeds.

Photosynthesis- Process in which plants use water, sunlight and carbon dioxide to make sugar (energy) and oxygen. The way green plants use sunlight, water and carbon dioxide to make their food.

Book Recommendations

🍏 Apple (See It Grow)- Dawn Bluemel Oldfield (Pre K-3rd)

🍏 How Do Apples Grow- Betsy Maestro (Pre K- 3rd)

🍏 Seed, Sprout, Fruit: An Apple Tree Cycle- Shannon Knudsen (Pre K- 3rd)

