

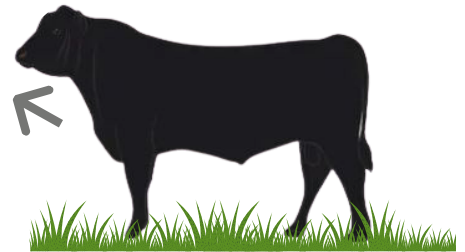
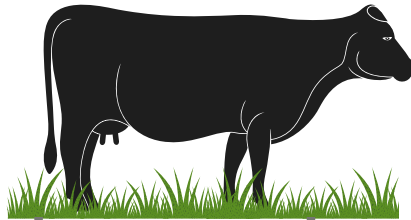
# BEEF CATTLE LIFECYCLE

Beef cattle are bred and raised to withhold different roles within the system to help maintain the industry.



A cow will calve either a female (heifer) or male calf (bull calf). Gestation time is 285 days.

The heifer will be raised and prepared to be bred.



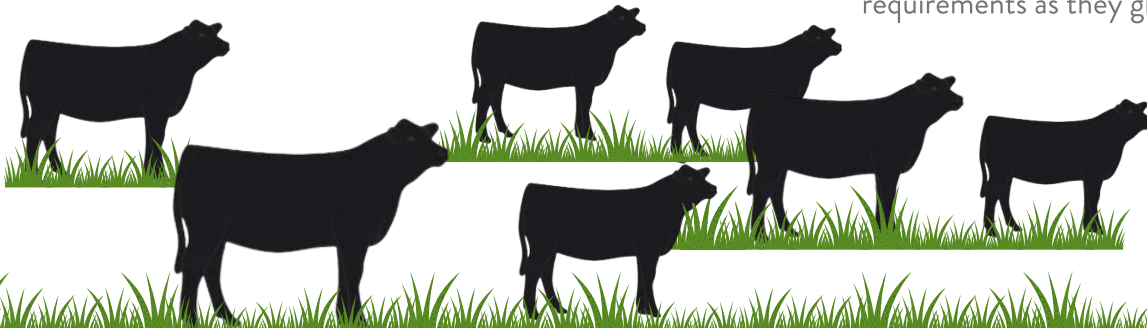
A bull will breed naturally or give semen for artificial insemination.

Heifers may enter the beef production cycle or be kept on the farm to breed.

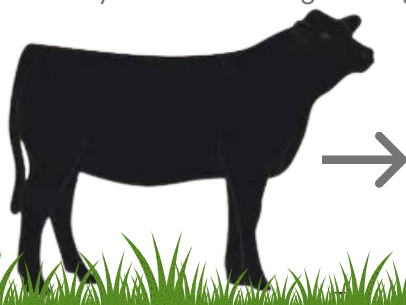
A bull calf may enter the beef production cycle as a steer (castrated) or be kept as a bull for future breeding purposes.



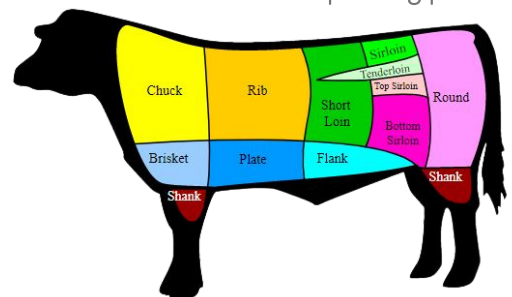
Cattle will continue to graze and may be fed supplemental feed to meet nutritional requirements as they grow and mature.



Cattle are finished in different ways. Some are sent to feedyards and some stay on the farm. Cattle may be finished on grass or grain.



Once cattle meet market weight they are sent to the packing plant.



COW/CALF

BACKGROUNDING  
OR STOCKER

FINISHING