

# AgBud



A series of horticulture insights

*Did you know?*  
Hibiscus blooms usually only last for one day.

## Overview

- There are hundreds of hibiscus cultivars.
- Flowers range in size from 2 inches in diameter to almost 10 inches.
- Hibiscus come in a variety of colors, and some have single flowers while others are double.

## Production

Hibiscus plants prefer full sun but can tolerate light shade.

Propagation is easiest through stem cuttings.

They are tropical plants that need warm temperatures to survive and like evenly moist soil but not saturated.

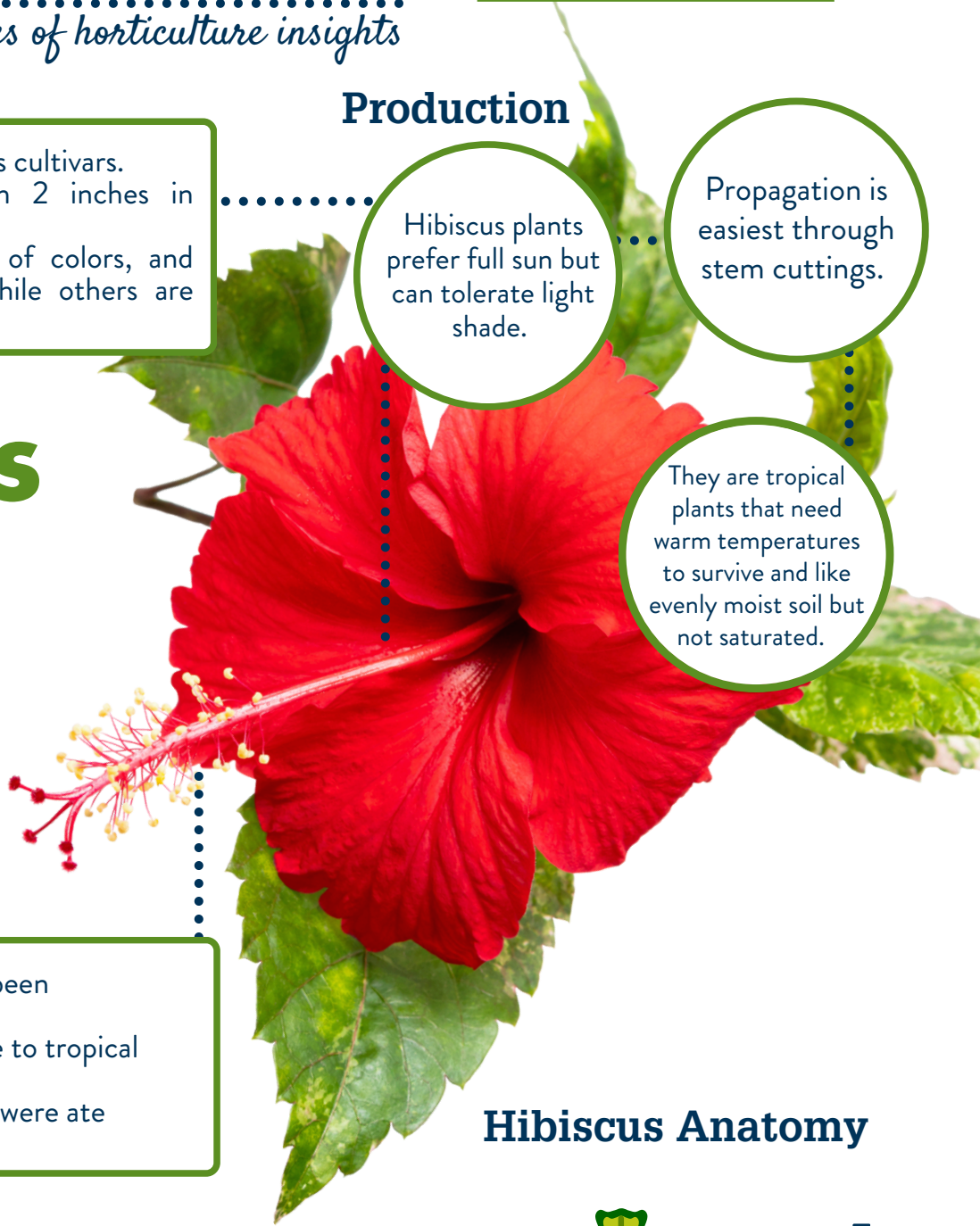
# Hibiscus

**Kingdom:** Plantae

**Family:** Malvaceae

**Genus:** Hibiscus

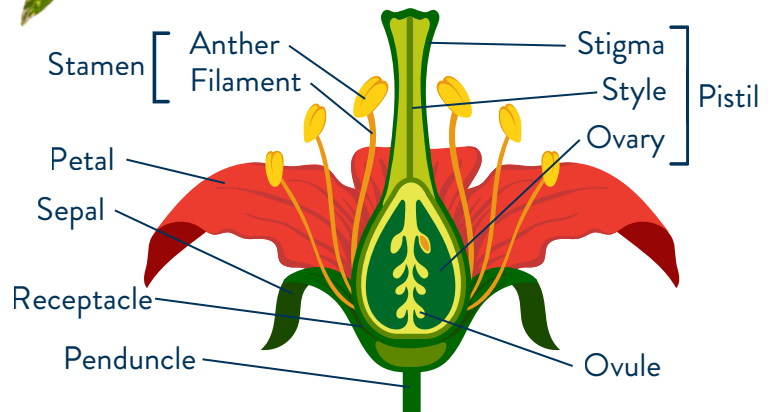
**Species:** Rosa



## History

- No wild hibiscus plants have been discovered.
- They are believed to be native to tropical Asia.
- It is believed that the flowers were ate similar to spinach.

## Hibiscus Anatomy



Sources: <https://acir.aphis.usda.gov/s/cird-taxon/aOut0000000mHdFAAU/aloe-vera>  
<https://plants.ces.ncsu.edu/plants/aloe-vera/>  
<https://www.nccih.nih.gov/health/aloe-vera>  
<https://extension.psu.edu/aloe-a-hardy-houseplant>